

OHC100 Series

Overhead concealed closers control door opening and closing, while providing an aesthetically pleasing design option for both interior and exterior use. The Falcon OHC100 Series is used with aluminum doors and frames, providing years of maintenance-free performance.

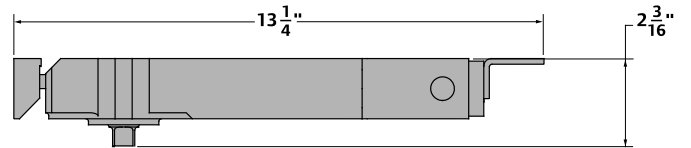
Standard Features

- Cast iron construction ensures lasting durability
- Fits inside standard aluminum frame header for improved aesthetics and increased security.
- 90° and 105° standard opening with optional hold-open
- Two size options available:
 - Fixed size 3 (OHC100 only)
 - Adjustable sizes 2-4 (OHC100A only)
- 5-year warranty

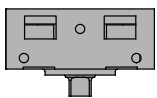
Top View



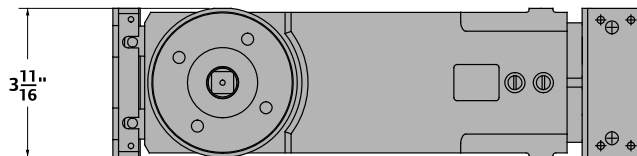
Side View



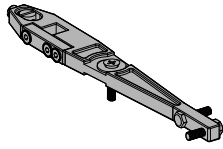
End View



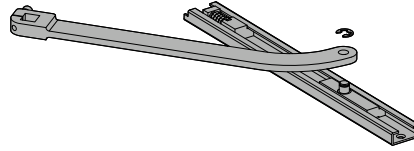
Bottom View



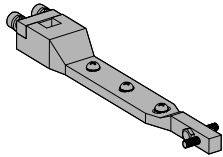
Installation Accessories



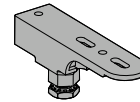
"S" Arm, OHC100-SL, OHC100A-SL
Non-handed arm, side load, center hung, steel forge.



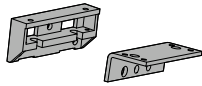
"VO" Arm, OHC100-VO, OHC100A-VO
Non-handed arm, offset arm w/ slide channel, steel forge.



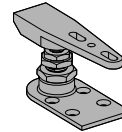
"A" Arm, OHC100-EL, OHC100A-EL
Non-handed arm, end load, center hung, steel forge.



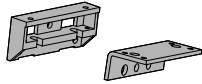
"GE" Pivots, OHC100-GE, OHC100A-GE
Non-handed, adjustable height, center hung, used with side load arm.



"FK" Mounting Brackets, OHC100-FK
Provides anchorage for fixed size cylinder to the door frame.



"DP" Pivots, OHC100-DP, OHC100A-DP
Non-handed, adjustable height, center hung, used with end load arm.



"AFK" Mounting Brackets, OHC100A-FK
Provides anchorage for adjustable size cylinder to the door frame.



How to Order SC80 Series

| | | Cylinder | Size | Cover | Finish | Arm | Accessories |
|------------------------------|--------------------------------------|----------|------|-------|--------|-----|-------------|
| STD | Standard | | | | | | |
| DEL | Delay | | | | | | |
| 1-6 | SC81 | | | | | | |
| Slim | SC80-72 | | | | | | |
| Full | SC80-72FC (optional, please specify) | | | | | | |
| Aluminum | | | | | | | |
| Dark Bronze | | | | | | | |
| Brass | | | | | | | |
| Rw/PA | Regular with Parallel Arm Shoe | | | | | | |
| Hw/PA | Hold Open with Parallel Arm Shoe | | | | | | |
| HD | Heavy Duty Arm | | | | | | |
| DS | Dead Stop Arm | | | | | | |
| DS/HO | Dead Stop Hold Open Arm | | | | | | |
| SS | Spring Stop Arm | | | | | | |
| SS/HO | Spring Stop Hold Open Arm | | | | | | |
| Soffit Shoe Support | SC80-30 | | | | | | |
| Blade Stop Spacer | SC80-61 | | | | | | |
| Auxiliary Shoe | SC80-62A | | | | | | |
| Plate | SC80-18 | | | | | | |
| Plate - Full Cover | SC80-18FC | | | | | | |
| Plate PA | SC80-18PA | | | | | | |
| Plate PA - Full Cover | SC80-18PAFC | | | | | | |

How to Order SC90 Series

| | | Cylinder | Size | Cover | Finish | Arm | Accessories |
|--------------------|---|----------|------|-------|--------|-----|-------------|
| STD | Standard | | | | | | |
| 1 | SC91 | | | | | | |
| 3 | SC93 | | | | | | |
| 4 | SC94 | | | | | | |
| Full | SC90-72 (optional, available with SC93/94 only, please specify) | | | | | | |
| Aluminum | | | | | | | |
| Dark Bronze | | | | | | | |
| Brass | | | | | | | |
| Rw/PA | Regular with Parallel Arm Shoe | | | | | | |
| Hw/PA | Hold Open with Parallel Arm Shoe | | | | | | |
| Plate | SC90-18 (available with SC93/94 only) | | | | | | |
| Plate PA | SC90-18PA (available with SC93/94 only) | | | | | | |

How to Order OHC100 Series

| | | | Cylinder | Size | Arm Finish | Arm | Accessories |
|--------------------|----------------------------------|-----------------|----------|------|------------|-----|-------------|
| STD 90° | Standard | STD 105° | | | | | |
| HO 90° | Hold Open | HO 105° | | | | | |
| 3 | OHC100 | Fixed | | | | | |
| 2-4 | OHC100A | Adjustable | | | | | |
| Aluminum | | | | | | | |
| Dark Bronze | | | | | | | |
| S | Side Load Arm | | | | | | |
| A | End Load Arm | | | | | | |
| VO | Offset Arm and Track | | | | | | |
| FK Bracket | | | | | | | |
| AFK Bracket | | | | | | | |
| GE Pivot | (not available with VO arm type) | | | | | | |
| DP Pivot | (not available with VO arm type) | | | | | | |

COMPETITIVE CROSS REFERENCE AND SAMPLE SPECIFICATIONS

Competitive Cross Reference

| Surface Closer Cross Reference | | | | |
|--------------------------------|-------------------------|---------------------------------------|---|----------------------------|
| Dor-O-Matic | SC71 ¹ | SC80 ² , SC81 ² | SC60 ³ , SC61 ³ | SC94 ⁴ , SC91 |
| Corbin | DC6000 | 3210M76 (3210) | | 4604M70 |
| Dorma | 8916 | 86162 ² | 640BCPA ³ /7302 ³ | 644BCPA ⁴ /7203 |
| Norton | 7500 ¹ /7700 | P8300 (P8500) ² | P1600BC ³ | P9304BC ⁴ |
| Sargent | 351 | 1430/1330 ² | 11303 ³ | |
| Stanley | D-4550 | D-3550 | 1650 | |
| Yale | P400 | P3300 (P3500) ² | P51BC ³ | P2304BC ⁴ |

¹Indicates identical footprint, ²Indicates identical footprint, ³Indicates identical footprint, ⁴Indicates identical footprint

| Concealed Closer Cross Reference | |
|----------------------------------|---------------------------|
| Dor-O-Matic | OHC100 Series |
| Dorma | RTS88 |
| Global | TC7000 |
| International | Series 100 and Series 200 |
| Jackson | 20-330 |
| Kawneer | Husky II |
| Rixson | 608, 0608, 700, 0700, 800 |
| Sentinel | 30 Series |
| Stanley | 30 Series |

Sample Specifications

Large Cylinder Closer

2.01 Closers and Door Control Devices

- A. Where manual closers are indicated for doors required to be accessible to the physically challenged, provide adjustable units complying with ANSI A117.1 provisions for door opening force and delayed action closing.
- B. Shall conform to ANSI A156.4, Grade 1, NFPA 80, NFPA 101 and UL10C.
- C. Closers shall be aluminum construction with steel lever arms, independent adjusting valves for closing, latching and back check. Hydraulic regulation controlled by tamper-proof, non-critical screw valves. All closer adjustments shall be shielded by plastic cover after installation. Pressure relief valve, PRV, doors closers will not be permitted.
- D. Full rack-and-pinion type closer, single-piece forged piston, chrome silicon steel spring, non-critical screw valves; backcheck, main speed and latch.
- E. Closers to be non-sized, field adjustable from size 1 to 6.
- F. Furnish all large cylinder non-sized closers with minimum 1 ½" diameter piston.
- G. Install closers to allow maximum degree of opening, position backcheck to activate well in advance of the stop position to cushion the swing and prevent door and frame damage. Do not use door closer to stop door travel. Unless specified, install closers with thru-bolt mounting method on metal and wood doors. Do not thru bolt if there has been special blocking specified in the wood door specification. Coordinate with the wood door specification.
- H. Available manufacturers: Subject to compliance with requirements. See competitive cross reference above.

Cylinder Options

Standard Cylinder (STD) – Standard cylinder provides a main speed function to control the motion of the door from maximum opening angle until the door is a few inches from the latch where latch function controls the final closing motion. The opening swing is controlled by the hydraulic backcheck function from about 70° to maximum opening angle.

Without Backcheck (WOBC) – Special cylinder provides a main speed function to control the motion of the door from maximum opening angle until the door is a few inches from the latch where latch function controls the final closing motion.

Delayed Action Cylinder – Special cylinder provides a separate adjustable delayed closing motion from maximum opening angle to approximately 70°. Then the main speed function controls the door motion until the door is a few inches from the latch where latch function controls the final closing motion. During the opening swing the door is controlled by the hydraulic backcheck function from about 70° to maximum opening angle.

WARRANTY

Falcon Door Hardware warrants its mechanical offering of locks, exit devices and door controls products manufactured to be free from defects in materials and workmanship for a period of **TEN (10) YEARS** from the date of manufacture with the exception of the products detailed in the table below. The terms and conditions of this new warranty apply to Falcon Door Hardware shipments made on or after November 1st, 2008.

This limited warranty does not cover products that (i) are not the proper size for the application; (ii) are not installed in accordance with Falcon’s published installation instructions; (iii) are installed with improper or incorrect parts; (iv) have been, in the opinion of Falcon, modified, repaired, or altered in any way without the express written consent of Falcon; (v) are used for purposes which they are not designed or intended; (vi) are subjected to misuse, abuse, negligence, or accident; or (vii) are grade 2 products used in educational facilities. The following costs and expenses are not covered by the provisions of this limited warranty; (i) labor costs for the removal and reinstallation of products; (ii) shipping and freight expenses required to return products to Falcon; (iii) normal maintenance; and (iv) economic losses. **THE PREVISIONS OF THIS WARRANTY DO NOT APPLY TO FINISHES.**

Falcon will replace the products which, in the opinion of Falcon, are found to be defective, provided said products are returned to Falcon.

FALCON SHALL IN NO EVENT BE LIABLE FOR ANY INCIDENTAL, CONSEQUENTIAL, INDIRECT, SPECIAL, OR PUNITIVE DAMAGES FOR ANY CLAIM WHETHER BASED ON CONTRACT; WARRANTY, TORT (INCLUDING, BUT NOT LIMITED TO, STRICT LIABILITY OR NEGLIGENCE), PATENT INFRINGEMENT, OR OTHERWISE, EVEN IF ADVISED OF THE POSSIBILITY OF SUCH DAMAGES.

This limited warranty is in place of all other warranties, expressed or implied, and excludes any warranties of fitness for a particular purpose or merchantability. No agent, representative, dealer, or employee of Falcon has the authority to increase or alter the obligations of this limited warranty.

Note: Should the Product be considered a “consumer product” as may be covered by the Magnuson-Moss Federal Warranty Act, please be advised that: (1) Some states do not allow limitations on incidental or consequential damages or how long an implied warranty lasts, so that the above limitations may not fully apply; and (2) This warranty gives specific legal rights and a user may have rights which may vary from state to state.

Falcon, Ingersoll Rand Security Technologies, 121 West Railroad Avenue, Princeton, IL 61356

| PRODUCT EXCEPTION | WARRANTY |
|---------------------------|----------|
| OHC100A CONCEALED CLOSERS | 5 YEARS |
| ELECTRONICS/ELECTRIFIED | 1 YEAR |