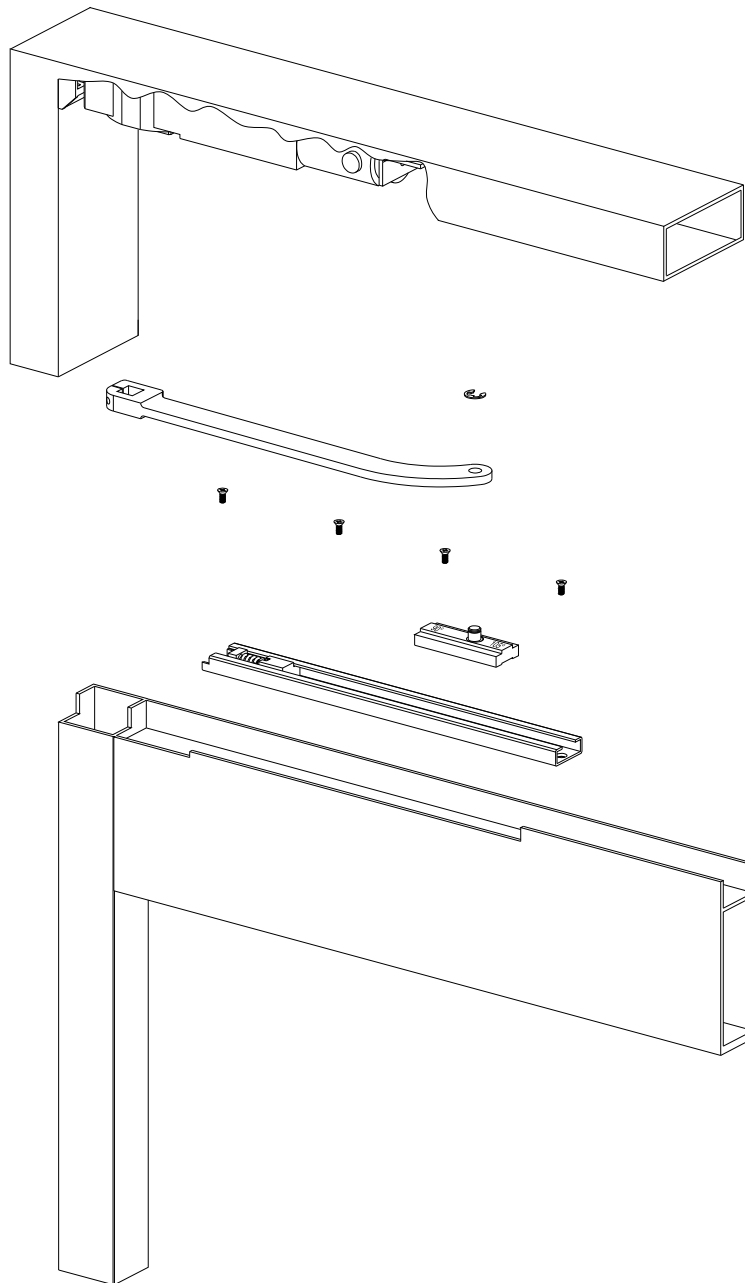


OHC 100 SERIES

OFFSET SLIDE ARM INSTALLATION INSTRUCTIONS

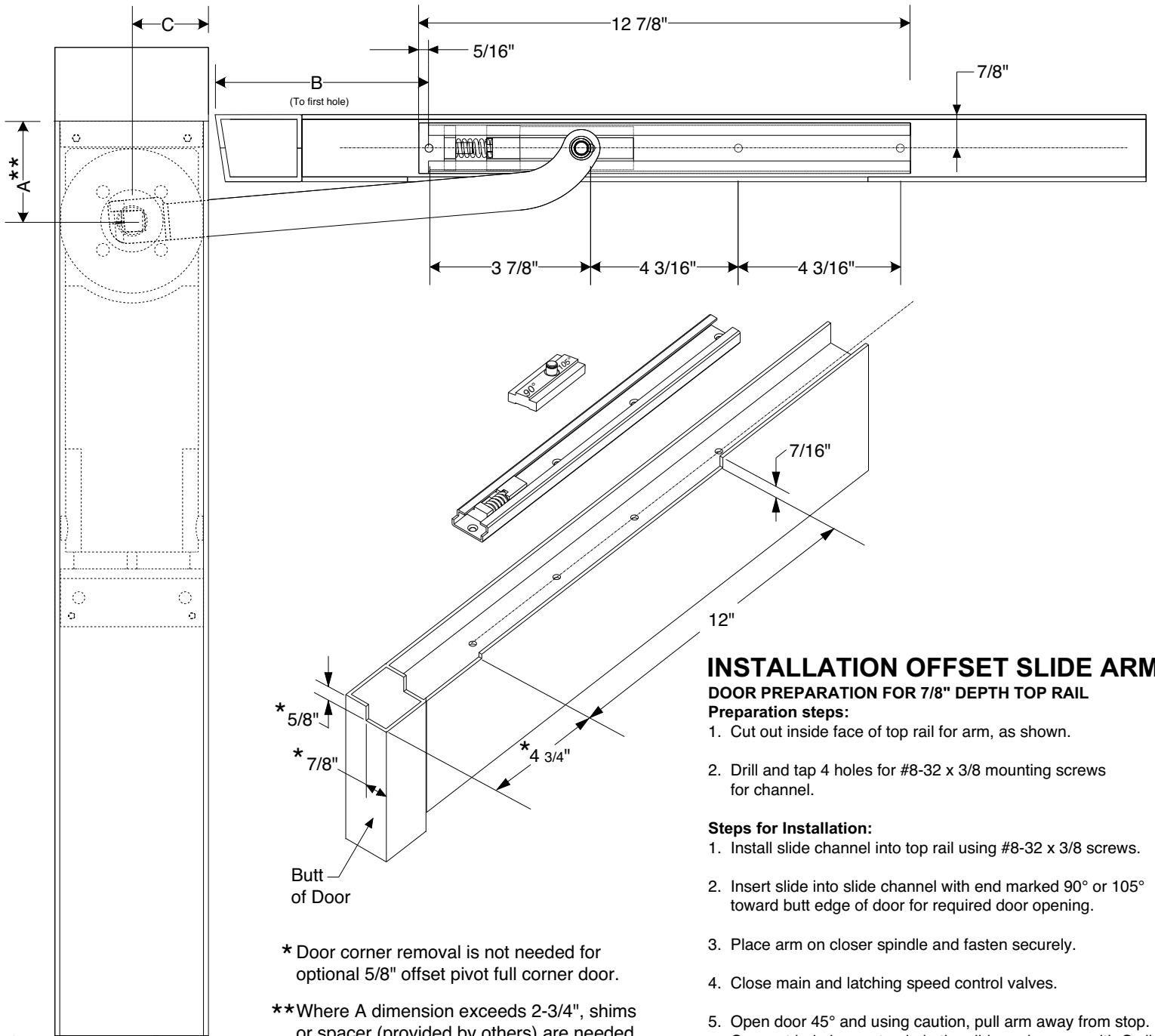
FOR OFFSET PIVOT OR BUTT HINGED DOORS FOR 7/8" DEPTH TOP RAIL

NOTE:
FOR INSTALLATION OF CLOSER
SEE CLOSER INSTRUCTION SHEETS.



⚠ CAUTION ⚠
IMPROPER INSTALLATION OR REGULATION MAY
RESULT IN PERSONAL INJURY OR PROPERTY DAMAGE.
FOLLOW ALL INSTRUCTIONS CAREFULLY. FOR
QUESTIONS, CALL Dor-O-Matic AT 1-800-815-1517

TO DETERMINE HOW THE DOOR IS HUNG AND DOOR OPENING USE APPLICATION CHARTS.



INSTALLATION OFFSET SLIDE ARM

DOOR PREPARATION FOR 7/8" DEPTH TOP RAIL

- Preparation steps:**
1. Cut out inside face of top rail for arm, as shown.
 2. Drill and tap 4 holes for #8-32 x 3/8 mounting screws for channel.
- Steps for Installation:**
1. Install slide channel into top rail using #8-32 x 3/8 screws.
 2. Insert slide into slide channel with end marked 90° or 105° toward butt edge of door for required door opening.
 3. Place arm on closer spindle and fasten securely.
 4. Close main and latching speed control valves.
 5. Open door 45° and using caution, pull arm away from stop. Connect hole in arm to pin in the slide and secure with C clip.
 6. Readjust main and latch speed valves for proper door closing speed.

* Door corner removal is not needed for optional 5/8" offset pivot full corner door.

**Where A dimension exceeds 2-3/4", shims or spacer (provided by others) are needed.

NOMINAL OPENING	3/4" OFFSET PIVOT FLUSH DOOR		
	A **	B	C
105°	3 3/4"	5 5/8"	2"
90°	3"	5 5/8"	2"

NOMINAL OPENING	5/8" OFFSET PIVOT 1/8 RECESSED DOOR		
	A **	B	C
105°	3 3/4"	5 21/32"	2"
90°	3"	5 11/16"	2"

Note: For mounting other than those listed in charts, contact Dor-O-Matic at 1-800-815-1517.

NOMINAL OPENING	7/16" BUTT HINGES FLUSH DOOR		
	A	B	C
105°	2 3/4"	5 5/32"	2"
90°	2 3/4"	5 5/16"	2"

NOMINAL OPENING	7/16" BUTT HINGES 1/8 RECESSED DOOR		
	A	B	C
105°	2 3/4"	5 5/32"	2"
90°	2 3/4"	5 1/4"	2"

(OPTION FOR FULL CORNER DOOR)

NOMINAL OPENING	5/8" OFFSET PIVOT 1/8 RECESSED DOOR		
	A **	B	C
105°	4 1/2"	6 3/8"	2 1/8"
90°	3 3/4"	5 11/16"	2 1/8"